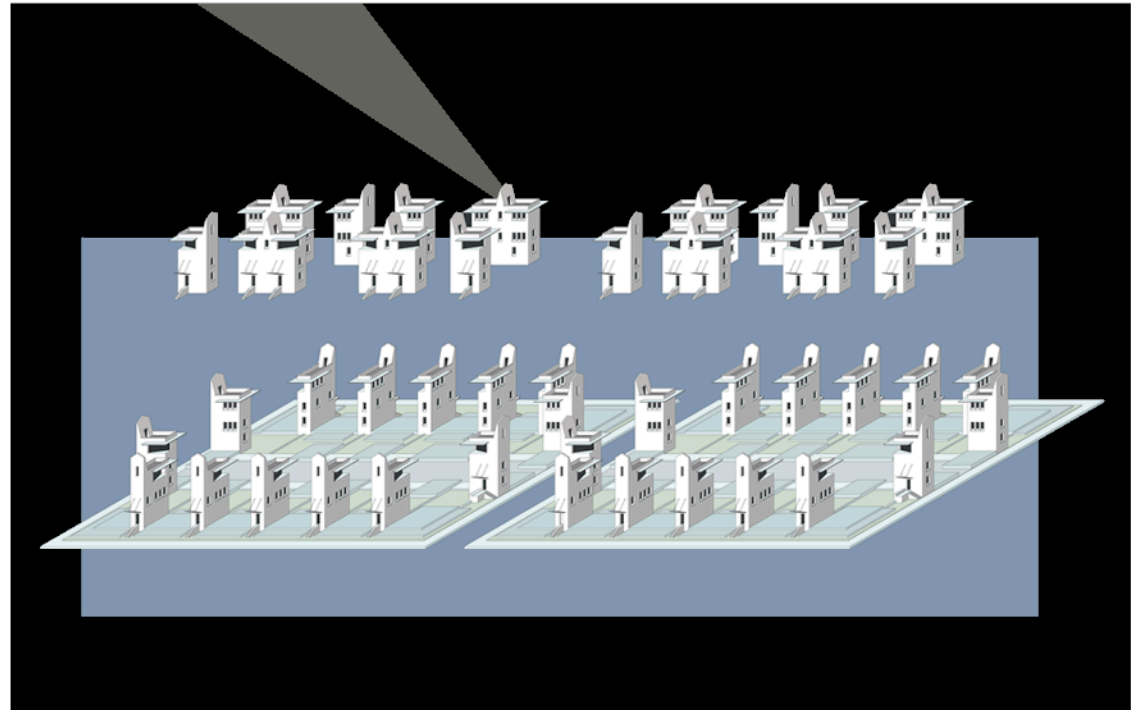




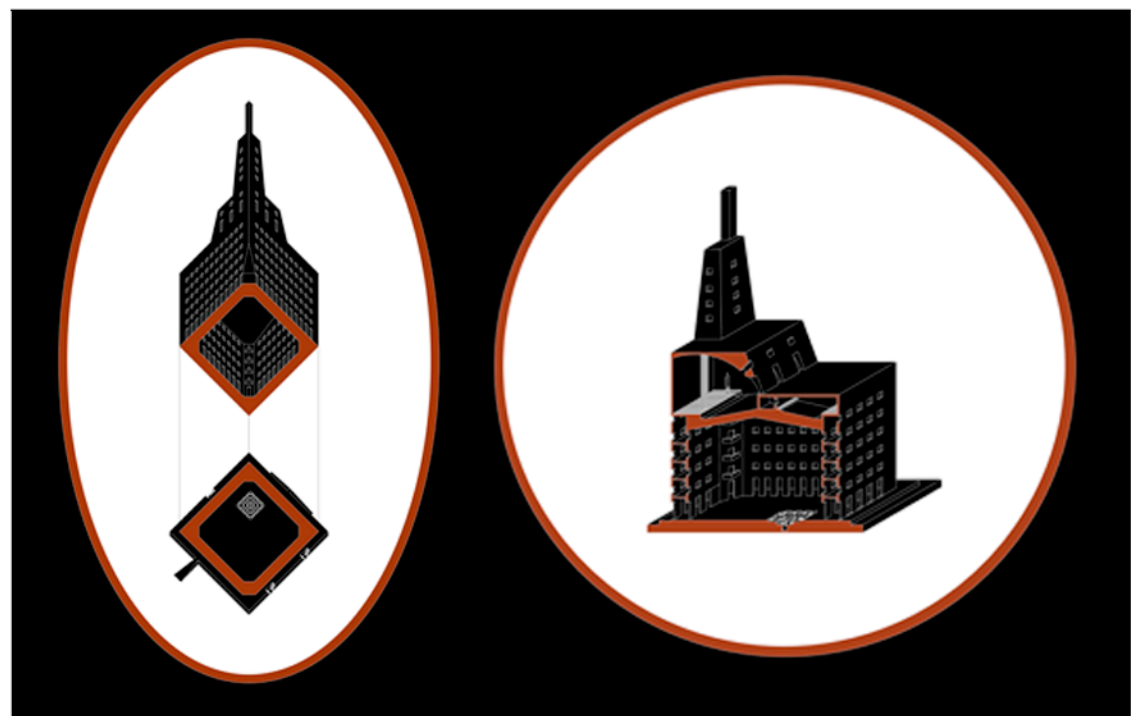
# Jaime Correa

**Associate Professor in Practice**  
**Full-Time Faculty**

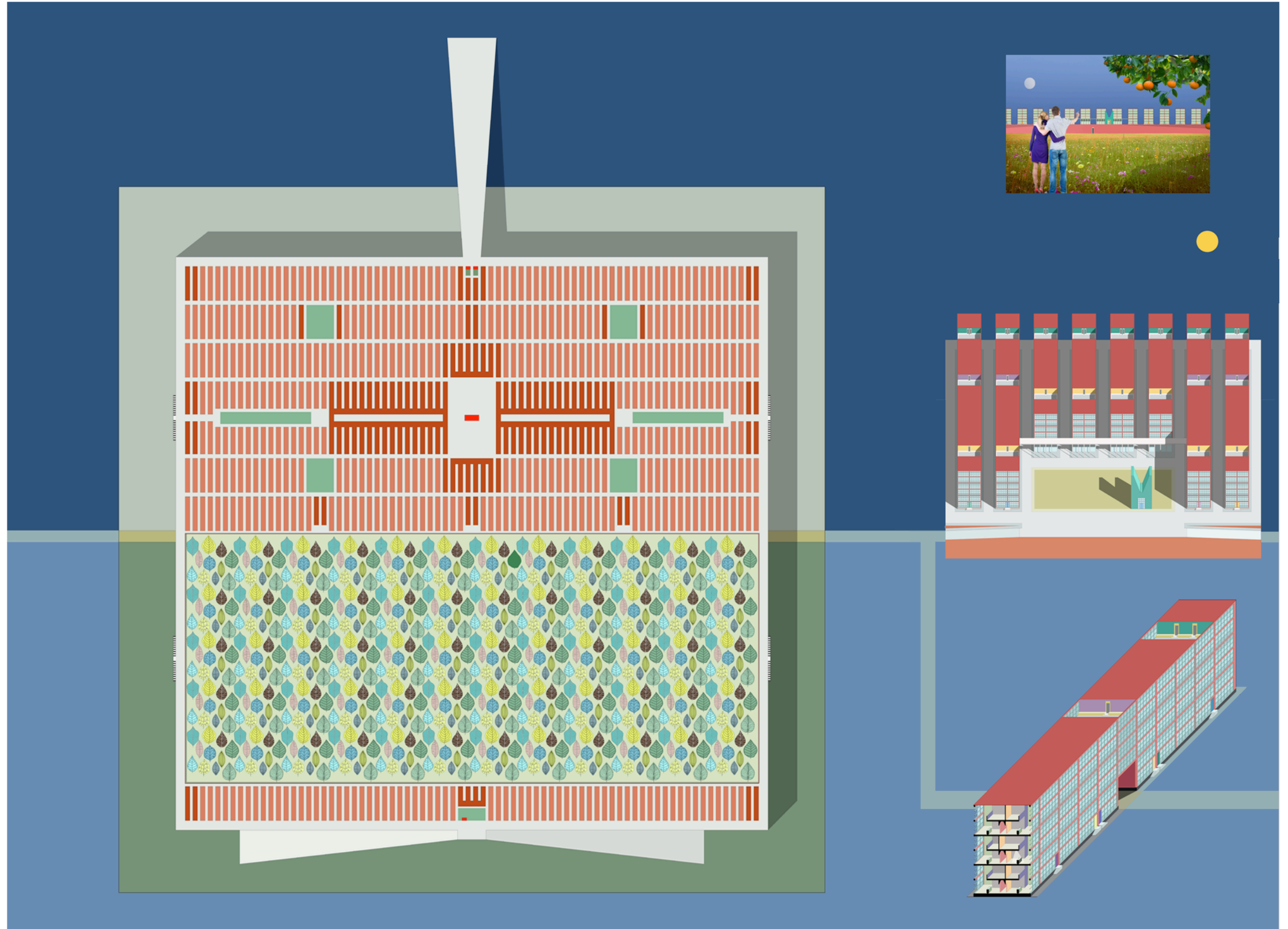
Jaime Correa coordinates Design III and Drawing II. He also teaches urban design studios and seminars in the Rome Program, design thinking for non-designers at the MRED+U, and Open-City seminars at the Department of Study Abroad. He was the Knight Professor in Community Building and the Director of the MUD (1996-2014). He is a Bottom-up Design Activist and the recipient of numerous teaching and professional awards, including: MRED+U Faculty of the Year Award, Woodrow W. Wilkins Award for Outstanding Teaching, Bi-annual Charles Barrett CNU Award, and Mentor of the Year at the Climate Reality Corps -under the tutelage of Former Vice-President Al Gore.



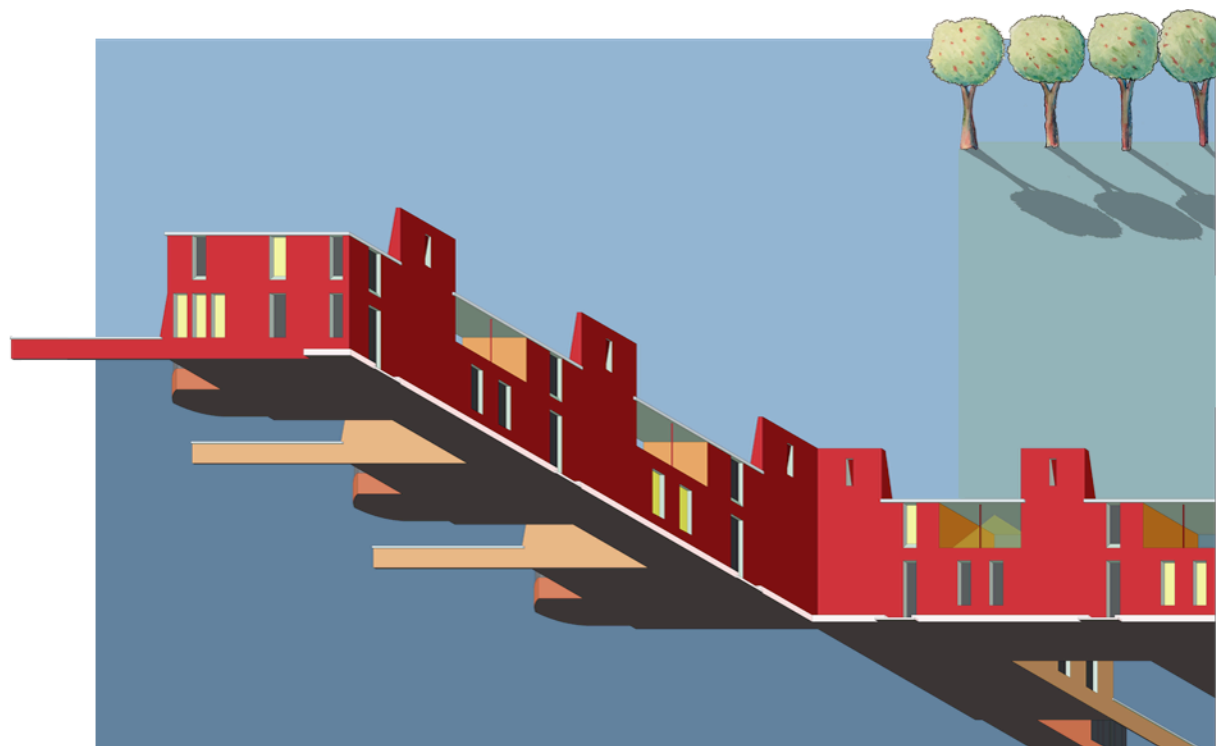
**ALTERNATIVE CITY:** micro-housing units inserted on the fire code gaps or at the rear of typical suburban American blocks - a retrofit project.



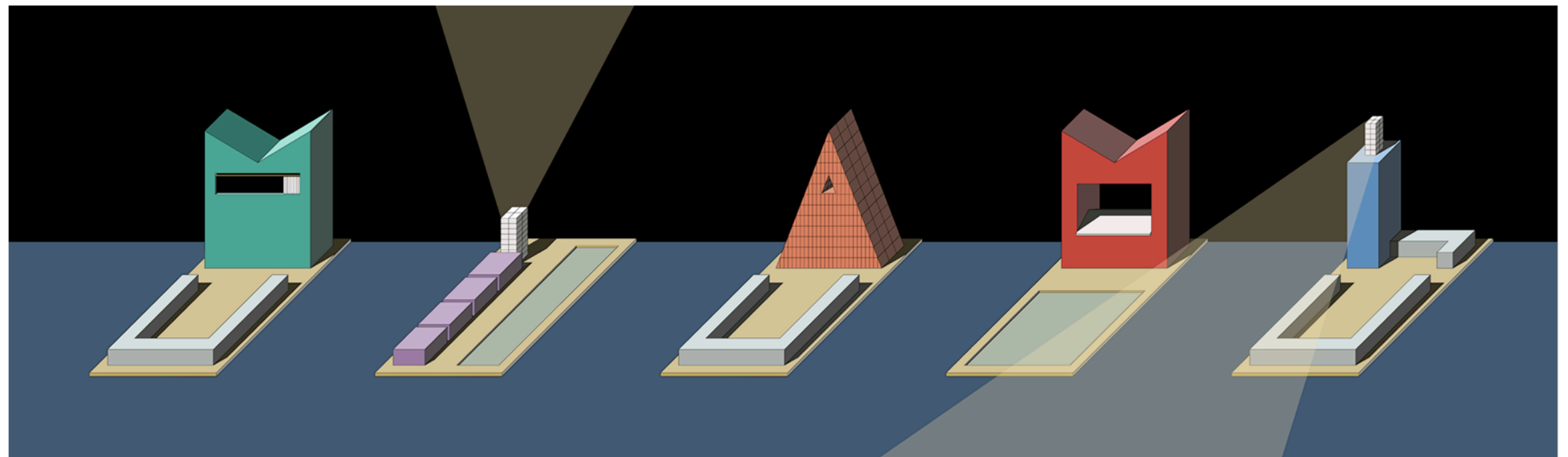
**HYBRID MARKET:** a covered market surrounded by a housing wrapper and crowned by theaters and luxurious tower penthouses - a sectional project.



**NEW ARCADIA:** a proposal for an autonomous evacuation community in North Florida. This project proposes new sea-level-rise aesthetics in the context of American urbanism and the universality of its pragmatic grid. The darker areas represent buildings supplying daily everyday necessities - an ontological project.



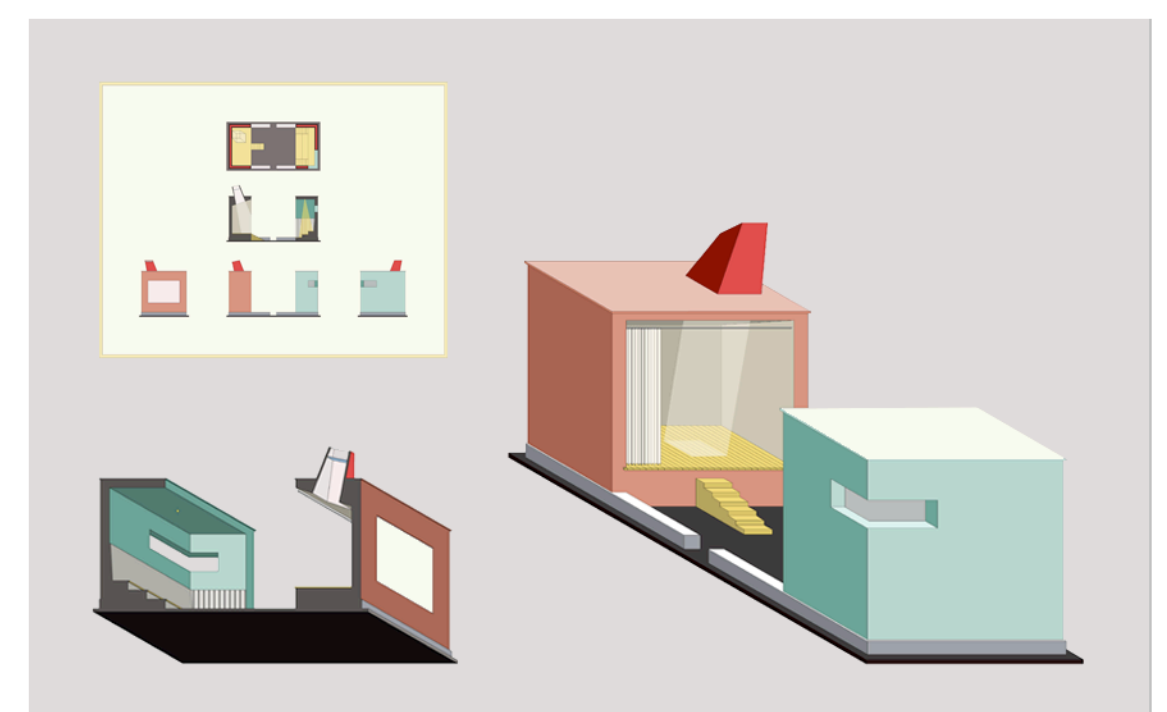
**RED SQUARE:** 22 units of social housing arranged in a typical "English Close" configuration with air ventilation chimneys - an iconographic project.



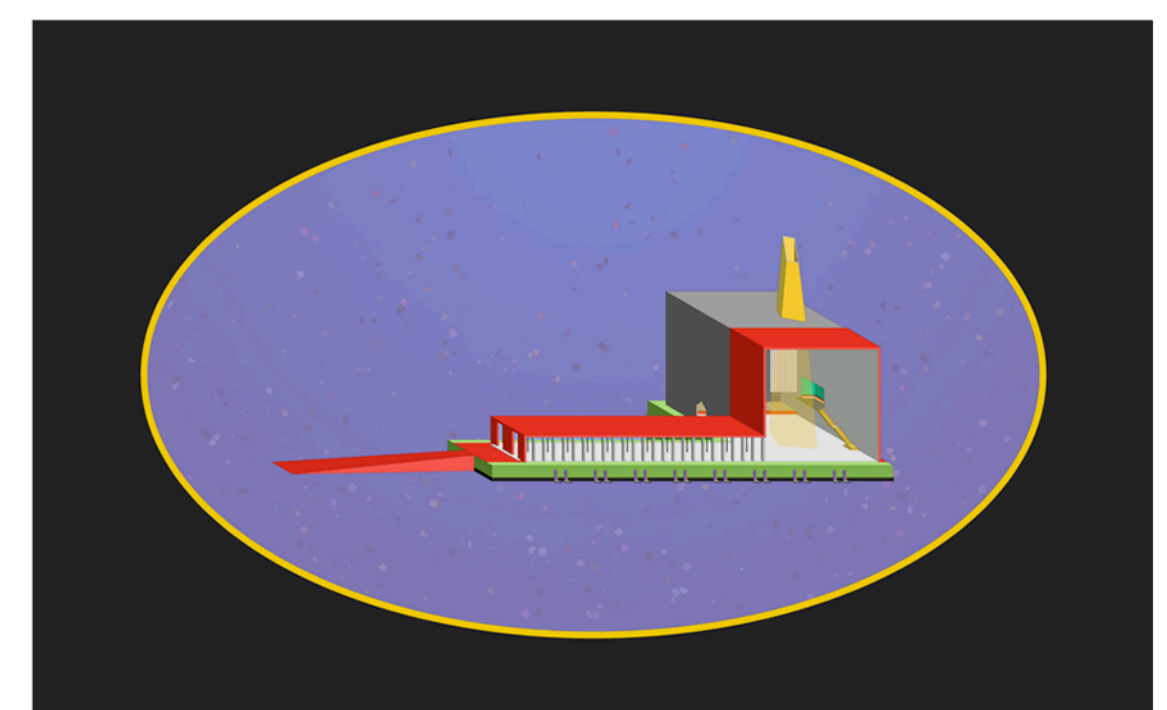
**POP-UP MARKET:** five independent units, composed of a temporary structure and a public space, can be assembled to spell a message with the letters representing the function of the structures: M (marionette theater), I (incremental bench), A (art wall), M (market stall), I (illuminated tower) - an informal urbanism project.



**NEW VOISIN:** an autonomous sea-level-rise adaptation project. 29 auto-sufficient island-towers pay homage to Corbusier's visionary plan for Paris. The original tower profiles becomes courtyard configurations. Two additional islands provide sun energy and low density neighborhood options - a rational re-contextualization project.



**MOBILE THEATER:** to be placed on open parking areas or as an infill of gap conditions in small urban lots - an ephemeral performance project.



**RED CARPET VENUE:** an open-air theater and performance school acting as a Stoa market - a multi-function supra-historic project.