



# Edgar Sarli

Lecturer

The projects displayed have been developed by Loeb Sarli Architects.



'W3' PRIVATE RESIDENCE. We were commissioned to make improvements to the single family residence upgrading the 1960's building to contemporary energetic and living standards.



'W3' PRIVATE RESIDENCE. The morning sun and the views to the new garden and proposed pavilion actively participate in the experience of the main living spaces of the house.



'W3' PRIVATE RESIDENCE. Our design focused on creating a narrative around the relationship of the built environment, and the uniquely beautiful virgin plot of land in the backyard. The facade facing the street was insulated with its character left almost unaltered. Contrarily, the existing loadbearing wall facing the garden was replaced by a steel structure to maximize glazed areas.



'KJPK' CHILDREN'S PSYCHIATRIC CENTER. The exterior walls are regulated by a strong orthogonal arrangement and are intentionally generic. They are finished with fiber cement panels. Once inside the building, the voids dominate the composition.



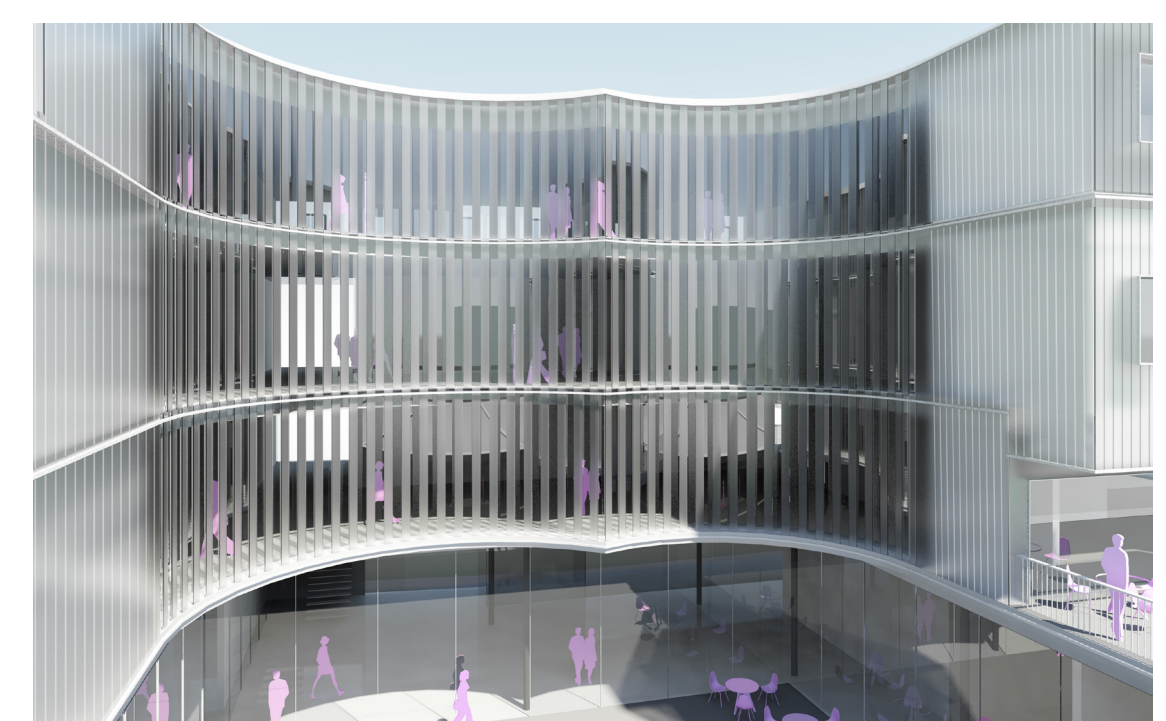
'KJPK' CHILDREN'S PSYCHIATRIC CENTER. They are defiant. They do not conform to the orthogonal matrix. Their geometry is clear and soft, and are finished with Oak. The intention is to create an opportunity for children to pause in their routine visits to the clinic.



'DSBG' UNIVERSITY BUILDING. Our project tries to be as compact and low as possible. The entire building is finished with U-Glass. The footprint of the building is determined by the perimeter of the site on three sides.



'CARABANCHEL' SOCIAL HOUSING. Our proposal consists of a compact cube of approximately 20mx 20mx20m. The regulating lines of the design in the interior are detached from the static geometry chosen for the exterior. The wet areas of the building (bathrooms and kitchens) are used as primary compositional elements, while the living spaces are the interstitial spaces between them.



'DSBG' UNIVERSITY BUILDING. The entrance exerts a force distorting the straight line of the main façade, the lobby and the courtyard that organizes the plan and the movement around the entire building. The shape of the courtyard is unrecognizable.



'CARABANCHEL' SOCIAL HOUSING. Entrance