



Ricardo Lopez

**Lecturer, Part-time
Assistant Director, Center for Urban
and Community Design**

Rick Lopez has been part of the faculty at the SoA for over a decade, teaching drawing courses, design studios, and preservation electives for both undergrads and grads. Recently he has been working with the Center for Computational Sciences to integrate emerging technologies to traditional methods of documenting historic structures. He has also participated in various travel abroad programs and has helped shape the school's "U-Serve" Day as part of his work at the CUCD, the school's community engagement arm. He and his wife, Xuan Florez, founded Florez Lopez Architects in 2009 where they engage a range of projects from the custom design of private residences to consultation on public/private urban design interventions. They are committed to preserving traditions of architecture, urbanism, and culture as they relate to region and climate, while adapting them to continually evolving contexts.



Catalonia, Coral Gables, 2006. Embracing the desire for an Urbanizing Identity, the Ranch House – an icon of the American suburb – is re-oriented from the Country to the Town. A new loggia with a cast-in-place order engages the sidewalk while supporting a bracketed concrete slab and tubular steel frame balcony, from which the new interior rediscovers the Giralda over the tree canopy. Return of the Spanish.



Morningside Loggia, Miami, 2014. In collaboration with Ram Krishnan. Seeking shelter from the South Florida sun and rain, a deep back porch re-orders the public realm of the house to the exterior. Transforming the architecture of the wall to that of the column yields an exploration of columnar form and spacing.



Moon Deck, South Miami, 2011. In collaboration with Shige Otsuki and Christopher Rodriguez. A mother stretches to the horizon while a son rhythm-and-rhymes. Multi-generational co-habitation adaptations include a master-suite as haven – in the form of a pavilion in the garden. Large framed openings, under Cantilevered eaves, are screened by layers of natural and manmade veils for modulated light and privacy.



Swimming Lane, Miami Beach, 2015. In collaboration with Steven Fett and Tina Zeng. From the new 50' lap pool, the swimmer meets an underwater living room at the foot of a new back porch. Over the softly colored concrete tiles, a thin structure supports a roof of interwoven wood work, which is draped over the outdoor kitchen and raised high above the dining table and lounge.



Mid-century Modern Addition, Miami Shores, 2016. The Architecture Collective: Ricardo Lopez, Wyn Bradley, Yamile Aponte, and Josh Durkee. Existing horizontal planes are complemented by vertical volumes, generating a new backdrop for the front garden and the pool deck. The front door is discovered by way of the new forecourt and front porch, with a concrete breeze block screen that is parted to invite guests in. An open plan stretches through the house and opens onto a large new open-air back porch, supported by a single mirrored steel column. There, at the threshold between inside and outside, the tropical landscape remains unobstructed.



Aquaestria, Redlands, 2014. In collaboration with Steven Fett, Rafael Fornes, and Ram Krishnan. A private equestrian community in the fresh water lakes of South Florida's Redlands, classic elegance in the form of five generous estates complete with a Riding Arena and Perimeter Riding Trail. Mission style and renaissance classics are adapted to a tropical climate and to the ongoing sea level rise.



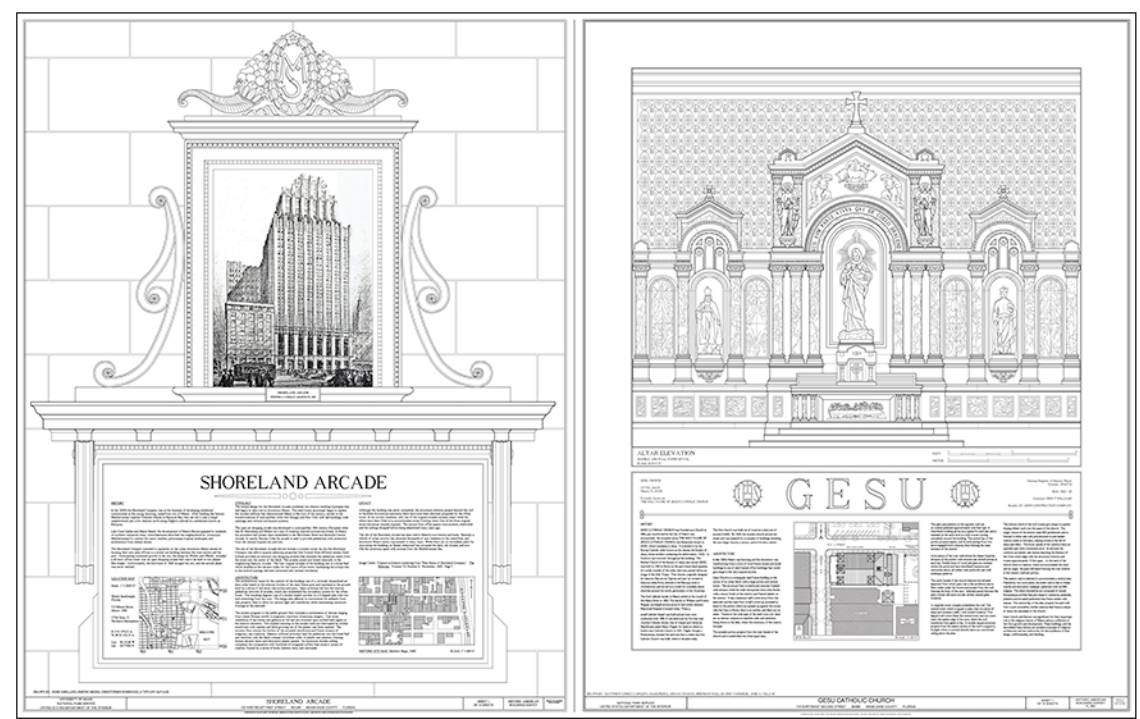
Rock Wall, Coconut Grove, 2006. A Mediterranean Revival Courtyard House is restored and additions include a Rock Wall to fulfill an outside perception of security. So as to soften the severity, the wall the wall undulates to frame pedestrian experiences linked directly to the existing house. All natural materials include locally quarried coral rock, cut to size and stacked on site, as well as and re-used clay tiles. No steel, no spalling.



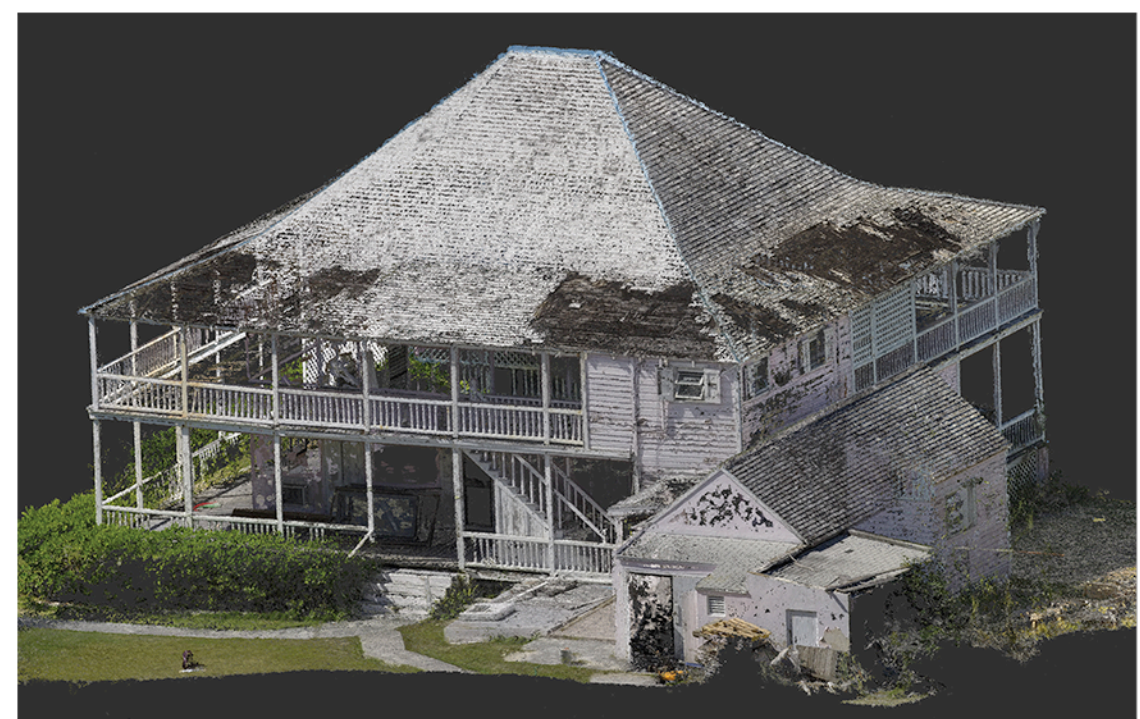
Ray's Garage, Pinecrest, 2007. A detached garage that accommodates many uses including weekend tinkering, restoration of antique cars, storage of recreational vehicles, display of vintage signs and artwork, in-laws quarters or a dancefloor. The building is inspired by local masonry vernacular warehouses, the American porch, and the classic roadside garage.



Tropical Metropolitan Suburban Neighborhoods, Princeton, 2016. The Architecture Collective: Steven Fett, Ricardo Lopez, Wyn Bradley, and Yamile Aponte. A growing population within urban boundaries and with ever growing transportation challenges is accommodated in this collection of neighborhood developments. Each has a neighborhood center to anchor moderately dense housing types and each is linked to the regional busway by way of a collector shuttle. One can still work in the heart of the metropolis and commute to an affordable and dignified suburb.



Historic American Buildings Survey, a Preservation Certificate elective at the SoA The School of Architecture has offers an elective course in the D ocumentation of Historic Buildings as part of the Preservation Certificate. In recent years Mr. Lopez has lead student teams to file multiple documentation projects in the Library of Congress and to earning Peterson Prize awards.



Integrating Technology to the HABS, ongoing research at the SoA At the request of Dean El-Khoury, the HABS course has evolved to integrate new techniques of documentation. Mr.Lopez has worked with the Center for Computational Sciences and the National Park Service to incorporate photogrammetry and point clouds into the architect's toolkit. This research was recently presented at an international conference will be supporting fundraising efforts intended to result in the restoration of internationally significant historic structures.